

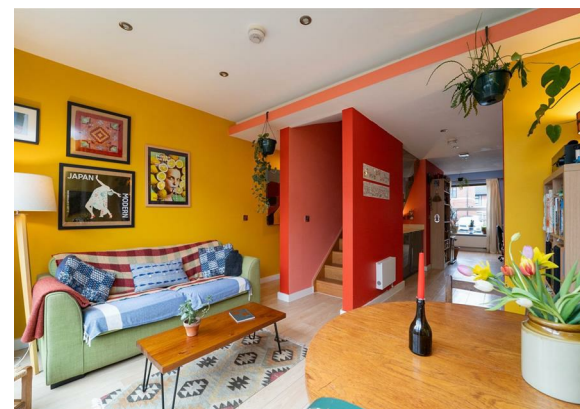
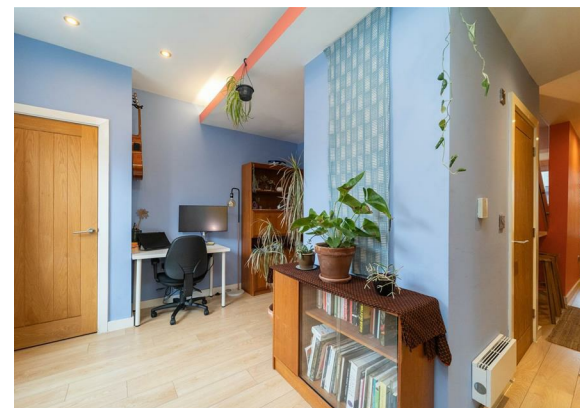
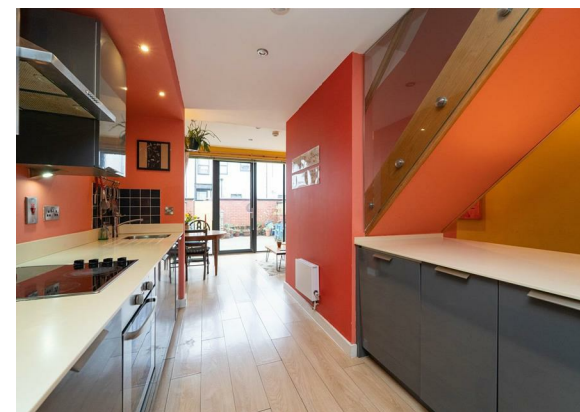
153 Rosebery Street, Moss Side, Manchester, M14 4UU



Offers In The Region Of £230,000


 3  1  2  B

VIDEO TOUR AVAILABLE A spacious & stylishly presented, THREE BEDROOM, mid- terrace property. Positioned on a residential road in the heart of Moss Side off Claremont Road. Close by to fantastic transport links, the Princess Parkway, schools, Alexandra Park and local amenities. In brief the well-planned property consists of an entrance hall, a W.C, a useful storage cupboard, a study area, a modern fitted kitchen, a delightful lounge to the rear aspect which benefits from floor to ceiling windows spanning the width of the property which allow views and access out into the rear garden. Stairs leading to the first-floor landing reveal a useful storage cupboard, three good sized bedrooms, and a white three-piece bathroom suite. The property benefits from gas fired central heating, an alarm system, high ceilings, and a rear enclosed garden.





EPC Chart

Energy Efficiency Rating		
	Current	Potential
Very energy efficient - lower running costs		
(92 plus) A		91
(81-91) B	81	
(69-80) C		
(55-68) D		
(39-54) E		
(21-38) F		
(1-20) G		
Not energy efficient - higher running costs		
England & Wales	EU Directive 2002/91/EC 	

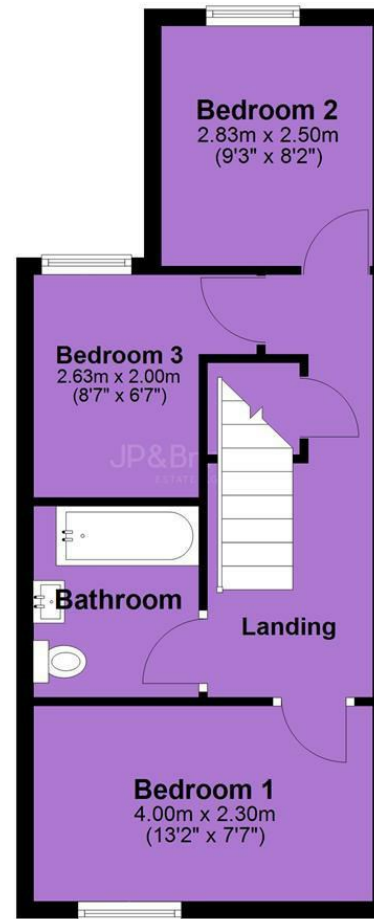


Tenure: **Freehold** Council Tax Band: **A**

Ground Floor



First Floor



JP & Brimelow Estate Agents Ltd
430 Barlow Moor Road, Manchester, M21 8AD
Tel: 0161 8822233

E: sales@jpbrimelow.co.uk www.jpandbrimelow.co.uk



JP & Brimelow
ESTATE AGENTS

NOTICE: JP & Brimelow Estate Agents Ltd for themselves and for the vendors or lessors of this property whose agents they are give notice that:

- (i) the particulars are set out as a general outline only for the guidance of intending purchasers or lessees, and do not constitute, nor constitute part of, an offer or contract;
- (ii) all descriptions, dimensions, references to the condition and necessary permissions for use and occupation, and other details are given in good faith and are believed to be correct but any intending purchasers or tenants should not rely on them as statements or representations of fact but must satisfy themselves by inspection or otherwise as to the correctness of each of them;
- (iii) no person in the employment of JP & Brimelow Estate Agents Ltd has any authority to make or give any representation or warranty whatever in relation to this property.

jpandbrimelowestateagents

@jpandbrimelow